

PART OF N.E. 1/4, SEC. 27, T.5 N., R.1 W., S.L.B.&M.

295

THE ORCHARD AT UINTAH

LOTS 5 - 11

UINTAH TOWN

SCALE 1" = 50'

SEE PAGE 294

PREFIX: 07-295

TAXING UNIT: 55

EXCEPT WHERE OTHERWISE SHOWN
ALL LOTS ARE OWNED BY
LANDMARK CONSTRUCTION, INC.

SEE PAGE 105

SEE PAGE 105

NOTE: 7' UTILITY AND DRAINAGE EASEMENTS
EACH SIDE OF PROPERTY LINE AS
INDICATED BY DASHED LINES.
EXCEPT WHERE OTHERWISE SHOWN.

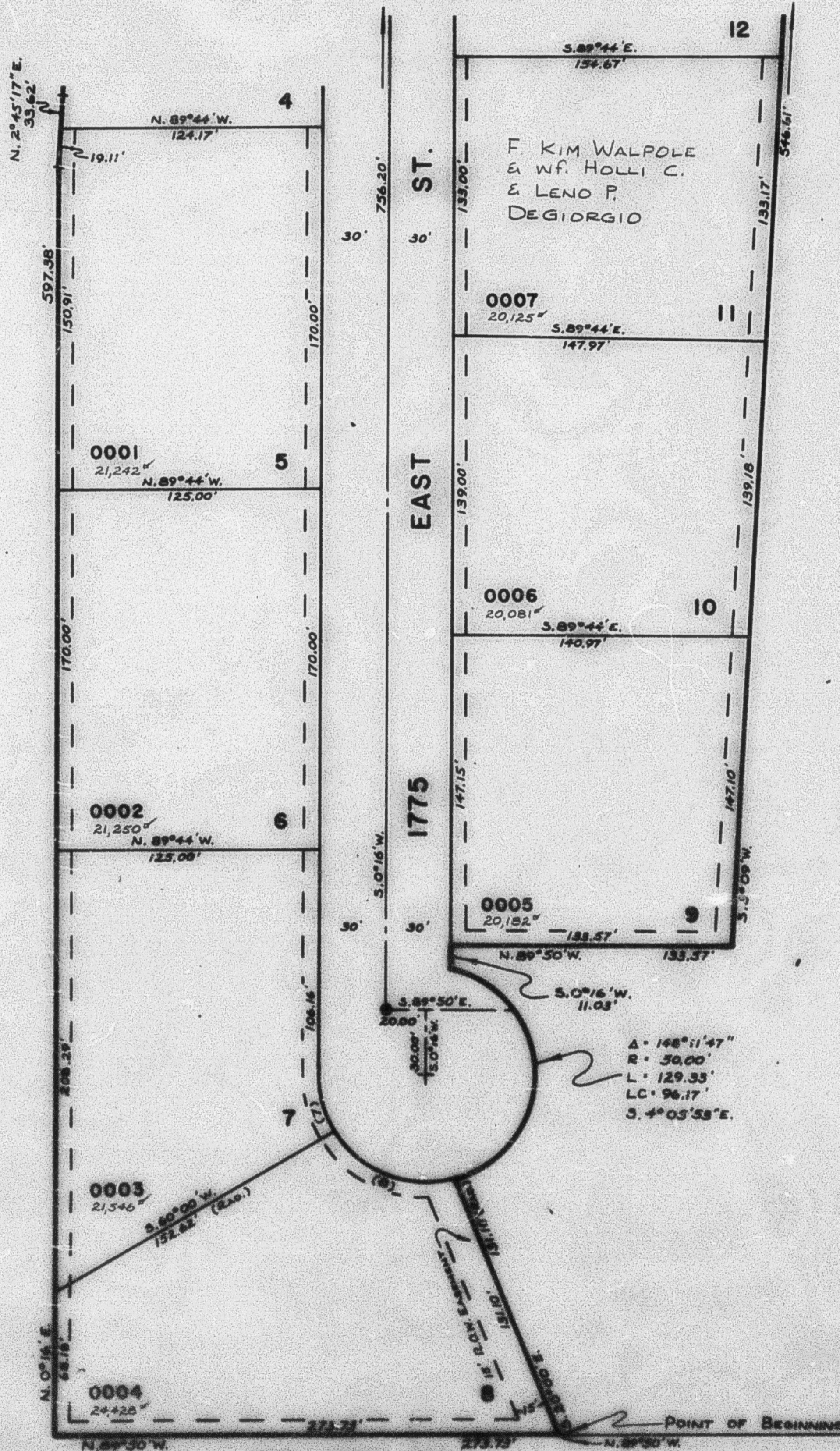
NOTE: FOR COMPLETE ENG. DATA SEE
ORIG. DED. PLAT IN BOOK 26 PAGE 93.

⊙ INDICATES SURVEY MONUMENT PLACEMENT

CURVE DATA

7) Δ = 30°16'	8) Δ = 80°00'
R = 50.00'	R = 50.00'
L = 26.41'	L = 69.81'
LC = 26.11'	LC = 64.28'
S. 14°52'E.	S. 70°00'E.

Δ = 148°11'47"
R = 50.00'
L = 129.33'
LC = 96.17'
S. 4°05'58"E.



SEE PAGE 107

SE CORNER OF THE NE 1/4
OF SECTION 27, T5N, R1W,
S.L.B.&M.